



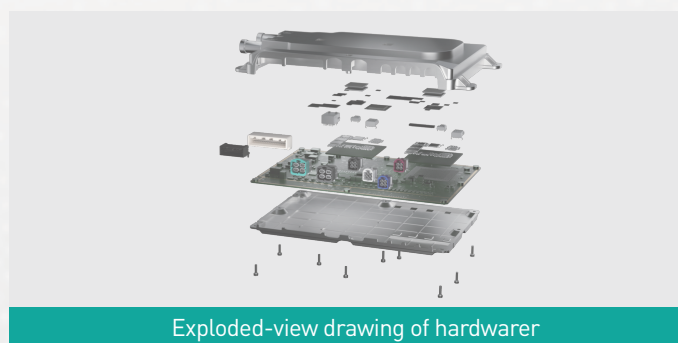
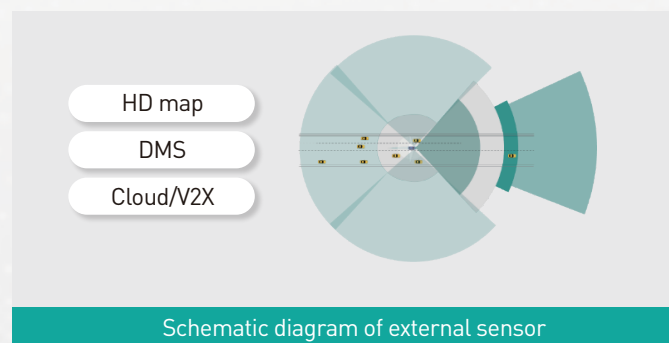
► nDrive 1H – ADAS Domain Controller Unit

One of the first in the world hardware solutions for autonomous driving based on Qualcomm's second-generation Snapdragon Ride Platforms.

Driving and parking integrated solution	Deep fusing solution for both HW and SW
High cost-effectiveness	Integrated driving and parking solution with deep fusion of hardware and software
Supercomputing power	More complicated planning algorithms and fusion capabilities for better human-machine co-pilot experience
Dual-chip design	Full-redundancy design; extensible functions
Safety compliance	ASIL-D certificate and independent safety island
Optimized product design	Lightweight design, ultra-low power consumption

► Technical Details

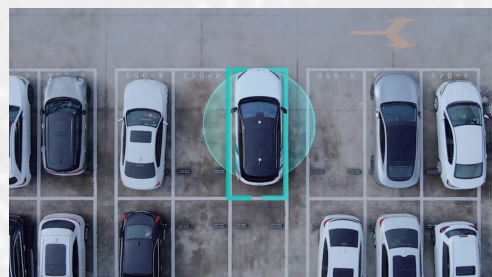
- ◉ **Computing power:**
 - AI: 200TOPS
 - CPU: 480KDimps
 - GPU: 2600GFlops
- ◉ **External sensor:** support up to 3L5R12V12U
- ◉ **Structure design:** double Qualcomm Snapdragon Ride 8650 chips
- ◉ **Cooling solution:** water cooling is adopted for high-end version (air cooling for low-end version)



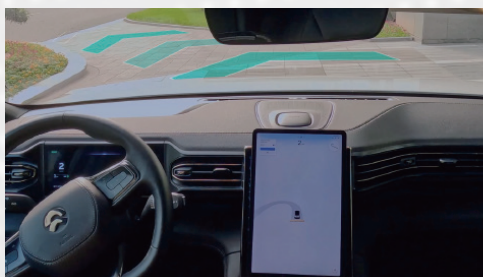
► Applications

- ◉ Support L2++ to L4 multi scenarios of autonomous driving

*Schematic diagram of some autonomous driving scenarios



HPA



NOP



HWP