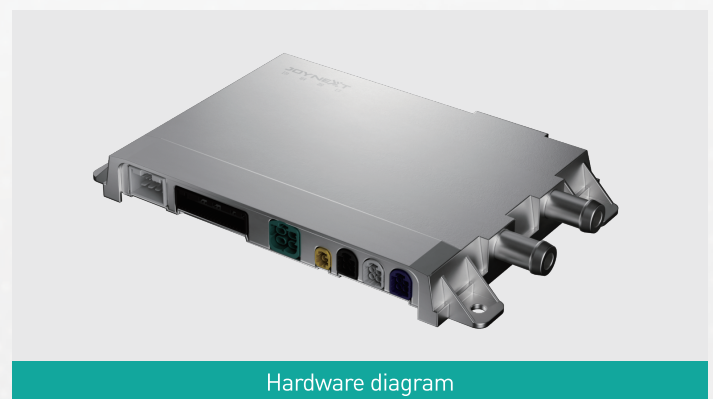
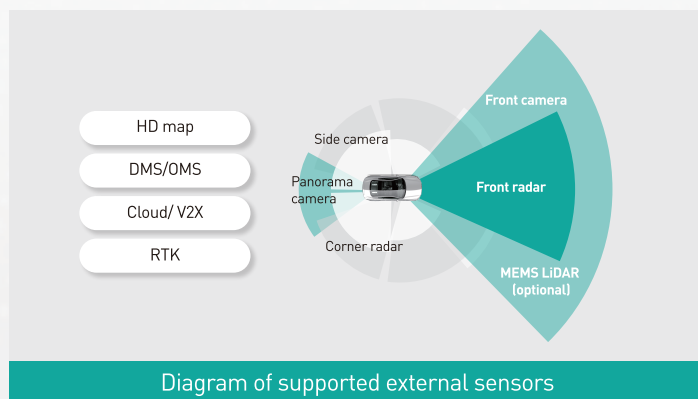


► nDrive M – ADAS Domain Controller

High-efficiency AI engine	The new generation of BPU architecture, high utilization of computing power and highly optimized DDR bandwidth
Powerful heterogeneous computing capability	The heterogeneous multicore processing architecture with high efficiency and versatility, supporting computing power redundancy and feature extension
Remarkable design on functional safety and cyber security	ISO26262 compliant product design, and built-in security engine

► Technical Details

- Computing power:
 - CPU: 26KDmips
 - BPU: 128TOPS
- External sensor: support up to 1L6R12V12U
- Rich interfaces: up to 12 ports for camera, 10 ports for CAN FD, and 4 ports for Ethernet
- Structure design: dual- or triple-chip configuration on MCU and SoC
- Cooling solution: liquid cooling design is adopted for the high-end version (air cooling for the low-end version)



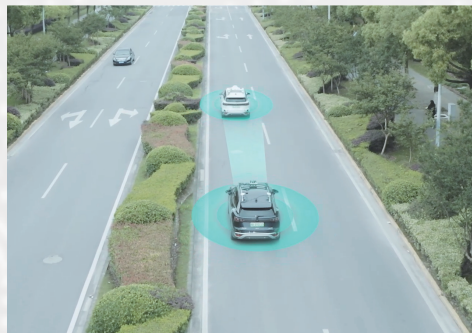
► Applications

- Support all scenarios of L2++ autonomous driving

*Autonomous driving scenarios example



Home AVP



NOP

