

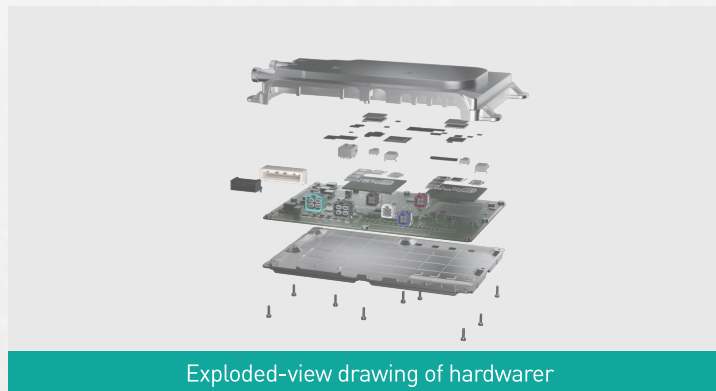
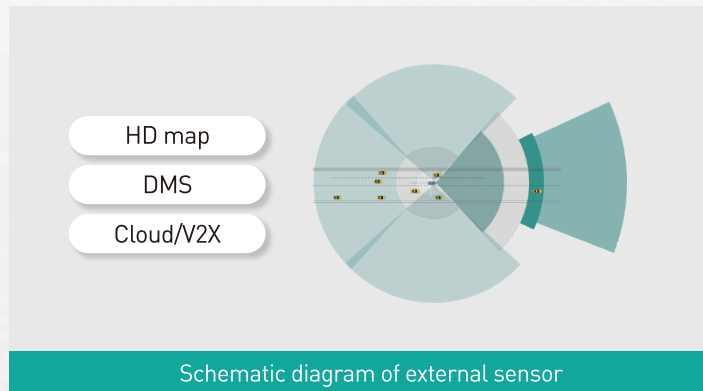
## ► nDrive H – ADAS Domain Controller

One of the first in the world hardware solutions for autonomous driving based on Qualcomm's second-generation Snapdragon Ride Platforms.

Driving and parking integrated solution	Deep fusing solution for both HW and SW
High cost-effectiveness	Integrated driving and parking solution with deep fusion of hardware and software
Supercomputing power	More complicated planning algorithms and fusion capabilities for better human-machine co-pilot experience
Dual-chip design	Full-redundancy design; extensible functions
Safety compliance	ASIL-D certificate and independent safety island
Optimized product design	Lightweight design, ultra-low power consumption

### ► Technical Details

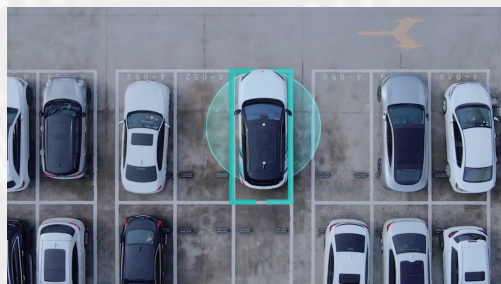
- ◉ Computing power:
  - AI: 200TOPS
  - CPU: 480KDimps
  - GPU: 2600GFlops
- ◉ External sensor: support up to 3L5R12V12U
- ◉ Structure design: double Qualcomm Snapdragon Ride 8650 chips
- ◉ Cooling solution: water cooling is adopted for high-end version (air cooling for low-end version)



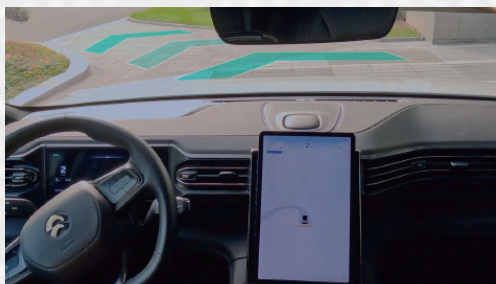
### ► Applications

- ◉ Support L2++ to L4 multi scenarios of autonomous driving

\*Schematic diagram of some autonomous driving scenarios



HPA



NOP



HWP