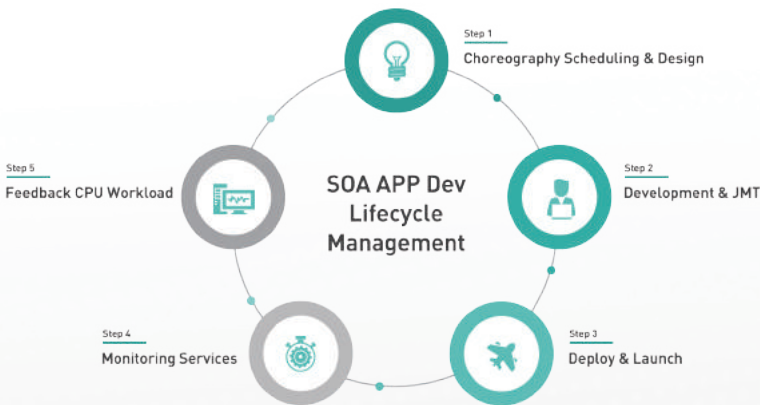


JOYNEXT nDrive-Autonomous Driving JMT

Cross-platform central-computing oriented deterministic communication and scheduling middleware

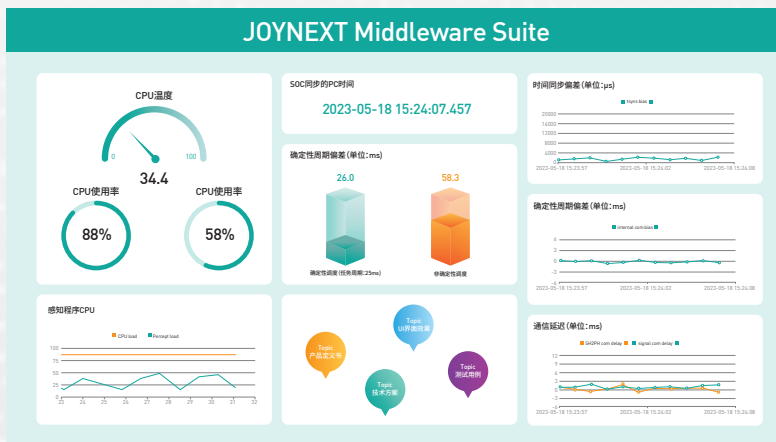
Technical Details

- **Global deterministic scheduling**, visualized tool-based task scheduling (DAG, directional acyclic graph), including multi-task scheduling strategies
- **Cross-domain deterministic communication and global scheduling fusion**
- **Global high-precision time synchronization**
- **Multi-platform seamless migration**, one-click transplantation of upper-layer applications



Features

- JMT provides deterministic communication and scheduling features and functions to build middleware based on platforms. Middleware tool chains can help improve product quality and accelerate development, and enhance post-development performance tuning through DAG



Applications

- Support rapid deployment by L2-L4 automated driving algorithm
- Accelerated implementation of multi-domain fusion products oriented for next generation of electronic architecture